

# CQue 2.0: A Linux Printer Driver for Canon Devices



**CQue 2.x** for Canon is a tool to create and manage printer queues on Linux platforms.

**CQue 2.x** is fully CUPS compatible and relies on the foomatic package for printing of PCL5, PCL6 and PDF data.

**CQue 2.x** has been designed in cooperation with the **Cellule Experts of Canon France**.

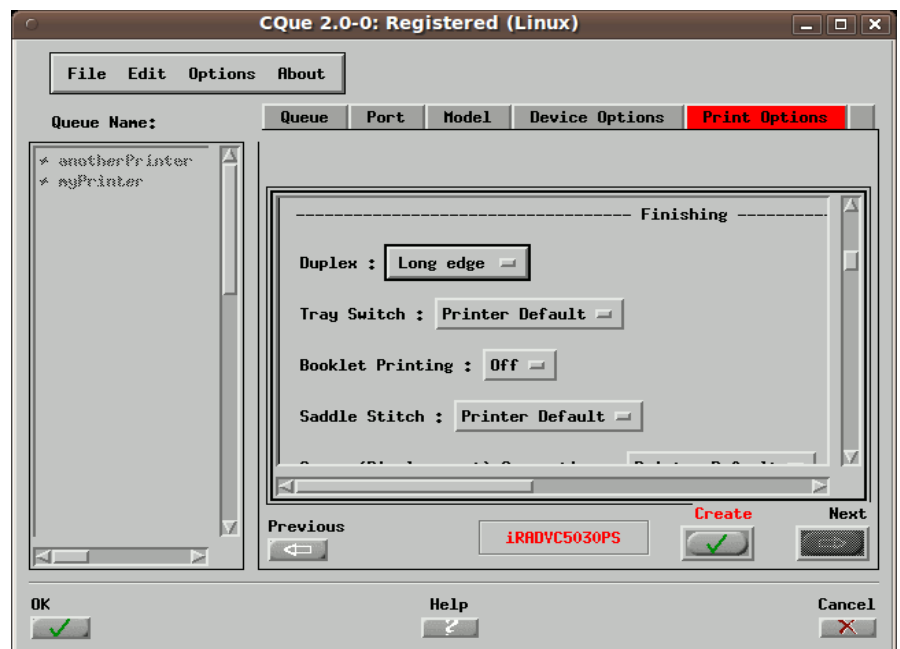
By means of a PPD file **CQue2.x for Canon** gives direct access to all the options of your colour or black-white printer - directly from the printer interface of most Linux applications.

**CQue 2.x** for Canon supports PostScript as well as PCL5 and PCL6 or PXL devices.

**CQue 2.x** for Canon is an indispensable tool for network printing on Linux.

The main features of **CQue 2.x for Canon** are:

- Creation of specific or dedicated printer queues giving access to all the features of the Canon device with just some mouse clicks.
- Use one single printer queue with different parameters.
- Manages all the features of Canon devices (paper trays, duplex printing, stapling, paper formats,...) as specified by the PPD file.
- Supports advanced features like: mailbox printing, secured printing and printing with department accounting - if



*Example Printer Options*

- if GTK+ is recent enough advanced options are directly supported from the printer interface of most Linux applications.
- Supports all current Canon devices of the iR, iR-ADVANCE, CLC and EFI families.
- Supports many command line options to fine tune printing on-line.
- Automatic internal transformation of PS and PDF data to PCL5, or PCL6 (or PDF to PS) through the foomatic engine of Linux.
- Available as RPM, DEB packages or as tar+gzip file.
- **CQue 2.x for Canon** is free of charge.
- **CQue 2.x for Canon** can be downloaded from the web site of Canon Europe.

## Compatibility

The *CQue 2.0 for Canon* product is available for the following Linux distributions:

Linux Type	32 Bits Operating System	64 Bits Operating System
RedHat (and Fedora Core)	7.2 (FC2) and more recent	kernel 2.6-27 and more recent
Mandriva	9.0 and more recent	kernel 2.6-27 and more recent
Suse (NOVELL)	8.0 and more recent	kernel 2.6-27 and more recent
Debian	8.0 and more recent	kernel 2.6-27 and more recent
Ubuntu	1.0 and more recent	kernel 2.6-27 and more recent
CentOS	5.0 and more recent	5.0 and more recent
Knoppix	3.0 and more recent	kernel 2.6-27 and more recent
Linux (Intel) in general	kernel 2.4-7 and more recent	kernel 2.6-27 and more recent

## Dependencies

The *CQue 2.0 for Canon* product depends on the following Linux packages:

- CUPS – a UNIX printer manager, by default available for most Linux distributions. The version of CUPS should be 1.2 or more recent.
- Foomatic-rip – a package for the transformation of printer description languages for Linux. The version of foomatic 2.0 or more recent.

## Support

The *CQue 2.0 for Canon* product is supported by the hot-line of Canon.

Supplementary and more recent information are available on the site of the SIC Forum:  
<http://www.franet.com/sicforum>.

### Spherical Integrated Circuits SIC International

Château de la Prolière  
36500 Sainte Gemme, France  
<http://www.franet.com>  
mail: [sic@franet.com](mailto:sic@franet.com)

