

Printing in UNIX/Linux Environments Training



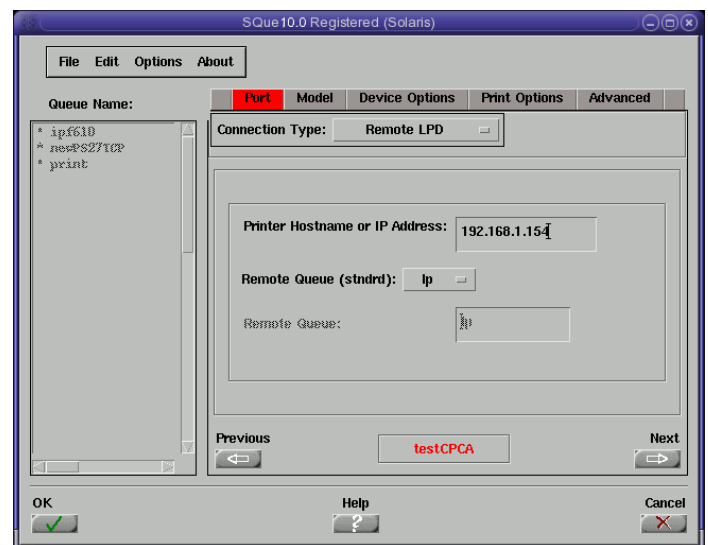
This training is based on various trainings given over the years at different printer manufacturers (in France and Europe). The scope of the training is for technical staff as well as for marketing and support staff.

Subjects covered by the training

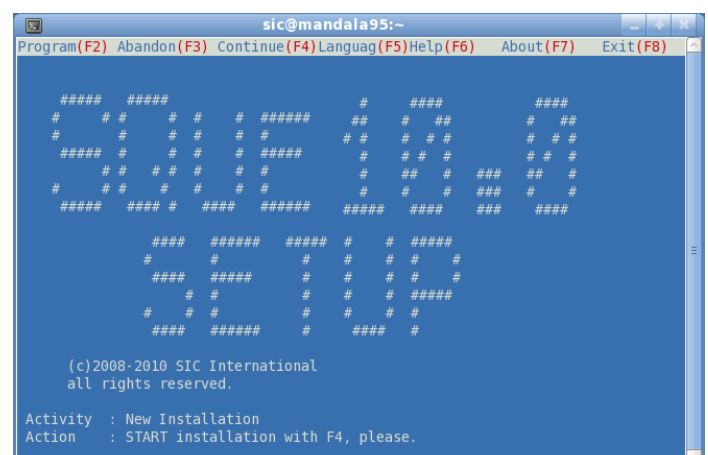
- UNIX: different types of UNIX from an historical perspective.
- Linux as a special brand of UNIX.
- Basic notions on different Printer Description Languages (PostScript, PCL, PXL, PJI) and their merits or disadvantages.
- Canon CPCA and UNIX/Linux printing.
- Relation and differences of UNIX and Windows printing.
- SQue: the solution of Canon for printing in UNIX environments.
- CQue: the solution of Canon for printing with Linux and CUPS.
- Platform specific tools for creating printer queues on UNIX.
- Customisation examples for printing on UNIX/Linux.

The SQue Product

- Different versions of SQue: X11/Motif and Text Mode.
- Installation on a typical UNIX workstation.
- Creation of a printer queue
- Setting options of a printer queue.
- Printing with SQue.
- Advanced printing options: Mailbox printing, secured printing and printing with department accounting.
- What happens when printing? Explanation and help for debugging SQue.



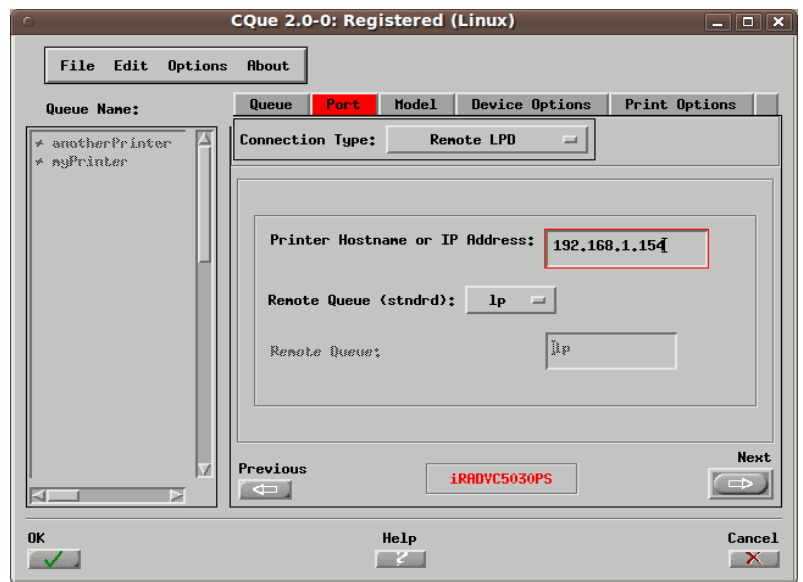
Configuring a remote LPD port with SQue



Text Mode Version of SQue

The CQue Product for Linux

- CQue and interrelation with CUPS for Linux.
- Installation on a typical Linux workstation.
- Creation of a printer queue
- Setting options of a printer queue.
- Printing with GTK+ Linux printer interface.
- Advanced printing options: Mailbox printing, secured printing and printing with department accounting.
- What happens when printing? Explanation and help for debugging CQue.



CQue with Remote LPD Port

Customisation and typical UNIX printing issues

- Logical printer queues with filtering for paper tray selection.
- Printing to mailboxes with a UNIX printer queue.
- Interfaces scripts and print options.
- Printing with overlays.
- Printing with bar codes.

Time : 1 - 2 days

Composition : It is possible to compose custom trainings which deal only with parts of the subjects covered (for example : SQue customisation only, etc.)

Participants max. : 8-10

Logistics : It is preferred that each participant can make use of his own laptop or computer in order to put the exercises directly into practice.

Language : English, possibly complemented by French, German or Dutch.

For more information you may contact us on the address here below.

Assistance

Further and more up to date informations may be found in the site of our SIC Forum:
<http://www.franet.com/sicforum>.

Spherical Integrated Circuits SIC International

Château de la Prolière
36500 Sainte Gemme, France
<http://www.franet.com>
mail: sic@franet.com

